

GT-50~300(mm) Strainer

- **Advantage:**
Protect the water meter in the pipeline from solid impurities and ensure the normal metering of the water meter.

▽ Application

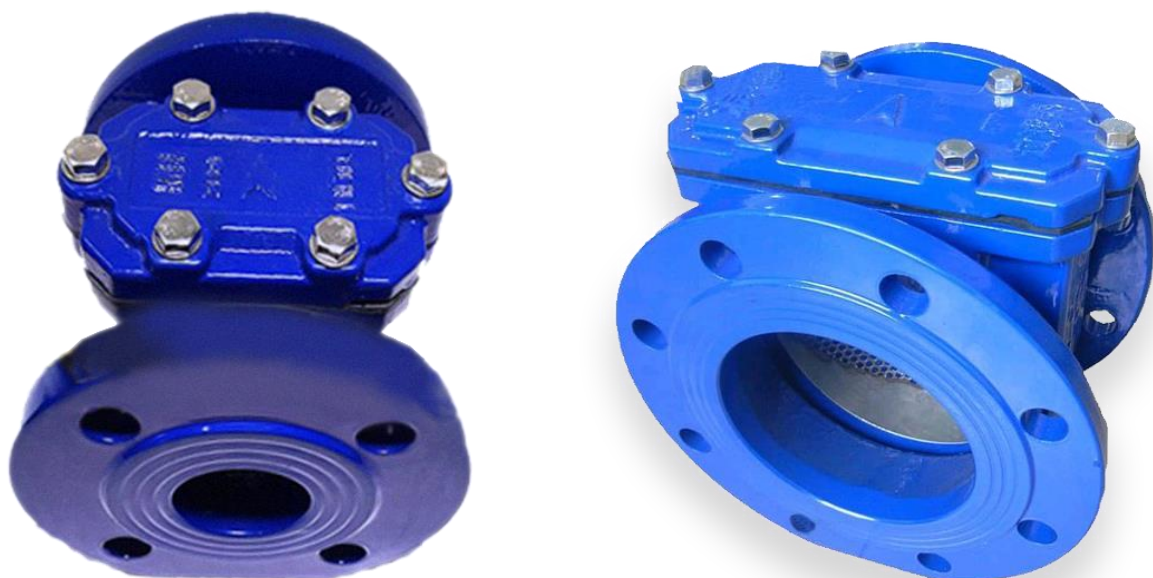
--T type strainer built-in stainless steel mesh, is widely used in hot n cold water and hot water heating and air conditioning system, etc., to ensure water clarity, prevent equipment inside the pipes get clogged, extend equipment life.

▽ Feature

- The strainer housing is made of ductile iron;
- Stainless steel filter screen, extending the service life of the product;
- The strainer screen is curved, increasing the filtration factor and circulation capacity, reducing the pressure loss;
- The bottom of the filter screen is in the shape of a pocket, which is convenient for cleaning dirt.

▽ Working condition

- Water temperature: 0.1℃~50℃ for cold water meter .
0.1℃~150℃ for hot water meter.



CALIBRATE [®]

High Accuracy

GT-50~300(mm) Strainer

Dimension :

Nominal size	Length mm	Height mm		D1 Outside diameter	D2 Bolt circle diameter	Connecting Bolt (n-M)	Pressure
	L	H1	H2	mm	mm		
DN50	150	157	157.5	165	125	4xM16	PN10 PN16
DN65	150	174	177.5	185	145	4xM16	
DN80	170	188	192.5	200	160	8xM16	
DN100	180	213	212.5	220	180	8xM16	
DN125	180	237	240	250	210	8xM16	
DN150	200	285.5	277.5	285	240	8xM16	PN10 PN16
DN200	220	344.5	332.5	340	295	8xM16 12xM16	
DN250	240	413	387.5	395	350	12xM16	PN10
		418	397.5	405	355	12xM16	PN16
DN300	250	463	437.5	445	400	12xM16	PN10
		470	452.5	460	410	12xM16	PN16

Information Istallations : (mm)

Type	Size mm	Installation Length	N.W Kgs	G.W Kgs	Connecting bolts
	GL-50	50	150	7.25	
GL-65	65	150	8.65	8.95	4-M16
GL-80	80	170	10.5	11	8-M16
GL-100	100	180	12.7	13.4	8-M16
GL-125	125	180	15.75	19.75	8-M20
GL-150	150	200	21.66	26.66	8-M20
GL-200	200	220	33.7	38.7	8-M20
					12-M20(MAP16)
GL-250	250	240	48	56	12-M20
					12-M24(MAP16)
GL-300	300	240	67	76	12-M20
					12-M24(MAP16)

GT-50~300(mm) Strainer

Mesh Specifications:

Specifications	Mesh parameters		Filter multiple
	Shape	Opposite side	Filtration are : Water cross-sectional area
DN50~DN125	Regular hexagon	5mm	>1.2
DN150~DN200		8mm	>1.0
DN250~DN300		8mm	

Pressure loss: under common flow, the pressure loss is < 0.025MPa;

- **Installation, maintenance and precautions :**

1. When the filter is used with the water meter, the installation should meet the installation requirements of the GB/T 778.2-2007 water meter standard;
2. The installation should facilitate the installation, disassembly and cleaning of the filter;
3. The direction of the indicating arrow on the filter should be consistent with the direction of water flow during installation;
4. Newly installed pipelines must first remove debris such as stones, silt, hemp and asphalt in the pipeline;
5. In order to avoid too much debris accumulation, resulting in pipeline blockage, user should regularly remove the filter screen, the filter must be relieved before operating the filter.
6. The pipeline pressure can't be higher then the maximum allowable working pressure of the filter, otherwise it will easily cause the shell to rupture and hurt people.